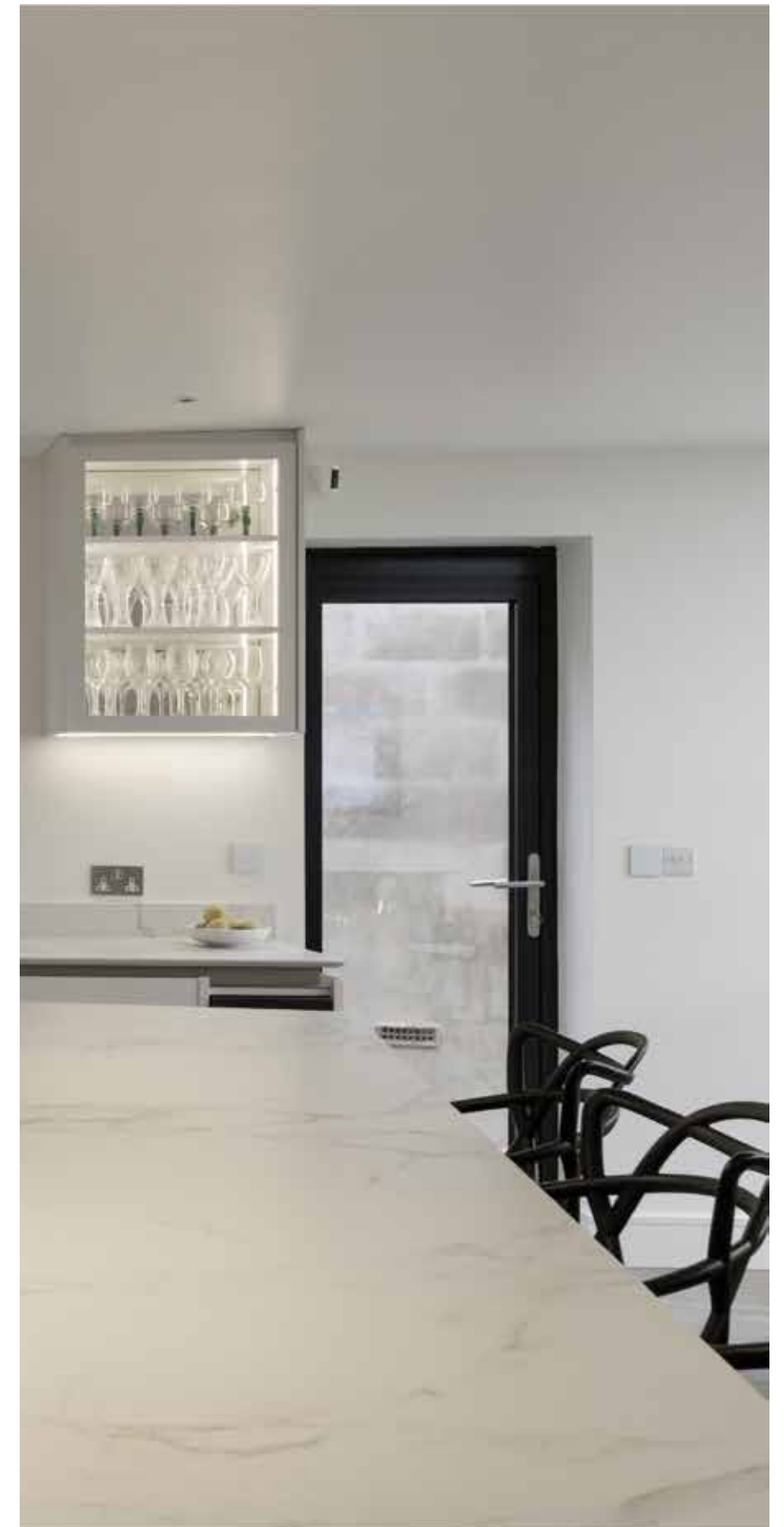






a british independent cabinetmakers and design studio







## about us

who we are .1

our process .2





## who we are

Ian started his career in cabinet-making after graduating from the LSE in Medieval history.

After studying at the London College of Furniture and an apprenticeship with a joinery firm in Chalk Farm, he set up Ian Dunn Woodwork and Design in 1981.

Having been established in our workshop in Stannary Street, Kennington for 18 years we moved to a larger, more modern workshop in East Dulwich in 2004.

The new workshop is fully equipped, and we have a team of skilled craftsmen working with Ian to produce each commission.

We are experienced in working in both domestic and commercial environments and provide a high level of expertise to all our clients. We provide competitive production from detailed specifications to complete project management. This includes creating a wide variety of bespoke cabinets, unique fitted and freestanding furniture along with supplying appliances, work surfaces, glass and lighting.







## our process

### 1. Initial Consultation

To discuss your needs and get a clear understanding of what is most essential for functionality and style.



## 2. Design

Ian and our in-house Project Manager and Cad Designers work to create a unique and detailed design

## 3. Construction

The design is put into production. All our work is carried out to a high standard, with close attention to detail.

## 4. Installation

Delivery of the finished project can be arranged when the site is ready for instalation.

## 5. Aftercare

We offer a return visit within 6 months of the site being completed to carry out any adjustments.





# catalogue

How to budget your project .1

Catalogue Ideas .2





## how to budget your project

For you to budget your project correctly, there are a few topics to take into consideration. Our team will guide you in finding the best solutions to fit your range, from the design to materials and appliances. Apart from considering the size of your areas and building costs (whether it's a renovation, new build or extension), here's a quick list to guide this process.



## 1. Design Process

Start by if you want a Bespoke Project or a Standard Kitchen. A Bespoke Kitchen will have more costs to you but will be truly adapted to your needs and lifestyle, giving you an increase in functionality and use of space. A Standard Kitchen will have fewer costs, but won't design specifically for you and your space.







2. Cabinets, Worktops and their Materials  
For Cabinets, the prices will vary for internal drawers (especially with pullout drawers) or adjustable shelves, as well as for the finishing on the external surfaces, (whether spray finished, veneered or painted). For Worktops, it's dependent on material per square meter and the finishing details (shape and texture).



CABINETS



Drawers



Shelves



Bi-lateral Shelves



Pull-out

Veneered



FINISHINGS

Spray Finished



Painted





## WORKTOP PARTNERS



Silestone by Cosentino is a unique brand – thanks to its properties and characteristics, and because anyone with a Silestone product also automatically becomes one of a kind. Its exclusive nature has enabled it to become a brand linked to the world of fashion and design, associated with the highest levels of innovation and modernity. Silestone is a compound made up of 94% natural quartz, which makes it extraordinarily hard and resilient, ideal for worktops.

Dekton is another work surface produced by Cosentino.

Dekton is a sophisticated blend of the raw materials used to produce the very latest in glass and porcelain as well as the highest quality quartz work surfaces.

The brand's properties make it highly scratch resistant, heat resistant to fire and heat and stain proof.

# DEKTON®

Silestone- Grey Amazon



Dekton- Fossil



Silestone- Eternal Statuario



WORKTOPS



Silestone- Artic



Silestone- Yukon



Silestone- Gris Expo

Neolith Iron Grey



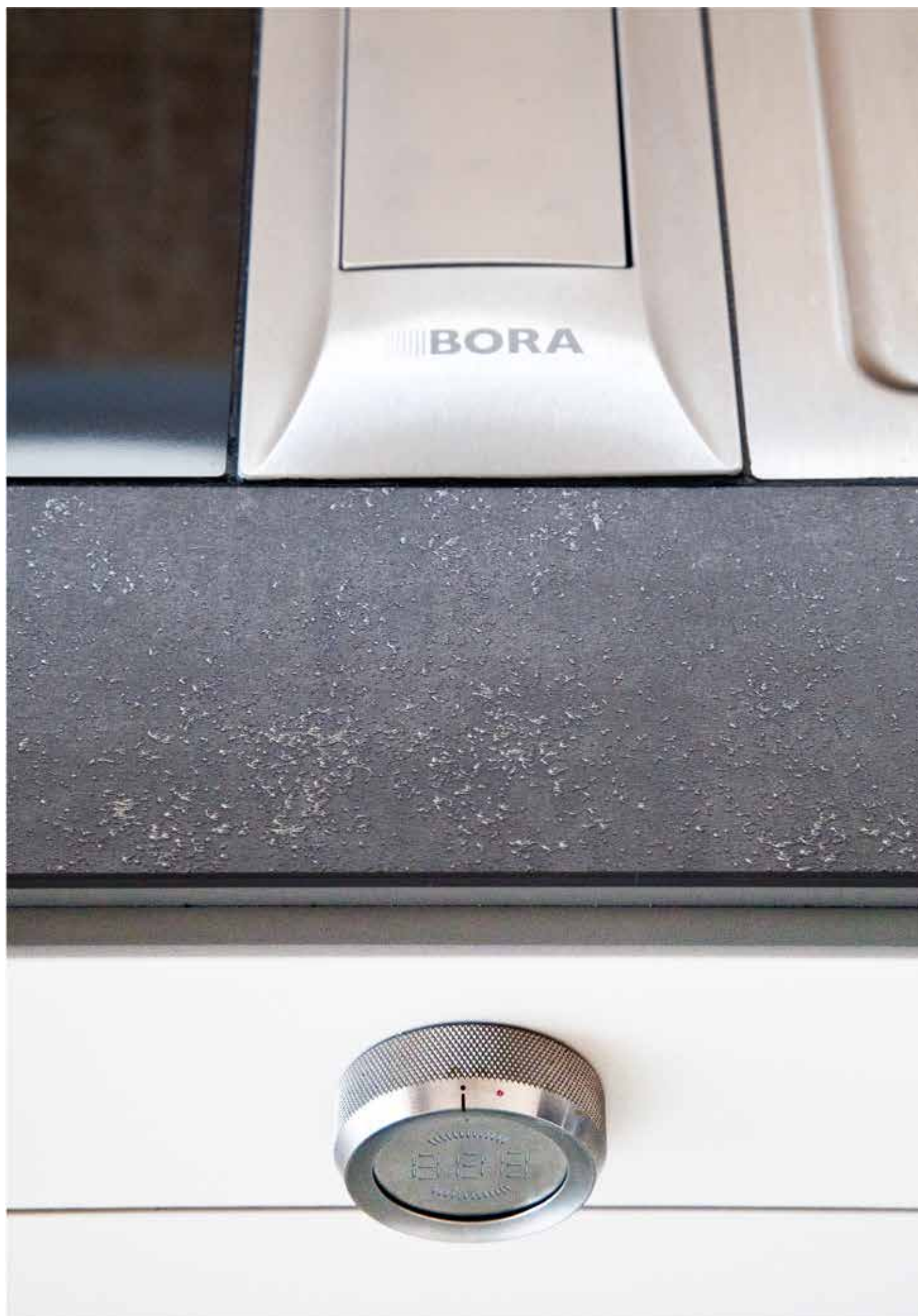
Silestone- Lagoon



Dekton- Entzo







### 3. Appliances

The appliances will allow you to fully live your space, so it's important to make sure they align with your lifestyle. We're talking hobs, ovens, fridges, dishwashers, sinks, microwaves, all the way to small wine coolers.

Our partners

Elica

Rangemaster

Quooquer

EXTRACTORS



Elica Extractor



Elica NIKOLATESLA Extractor  
(from Elica's portfolio)



Elica LULLABY@ Extractor  
(from Elica's portfolio)

Quooker Flex- from £1150



Quooker Nordic Twin Taps- from  
£1200



Quooker Classic Nordic Single  
150



TAPS

## COOKTOP PARTNERS



Miele designs represent innovation, value and timeless elegance. Miele stands for fascinating technology and excellent results combined with minimum energy consumption. This applies to the hygienic and gentle care of your laundry, your flooring and your crockery as well as when conjuring up exquisite culinary delights. Miele believes in clean lines, timeless elegance and intuitive handling. Whether a conventional rotary switch, discreet sensor controls or a high-resolution touch display: operating a Miele is both easy and fun.

Bora is a German-based company that designs and manufactures high-quality hobs with worktop extraction.

The BORA cooktop extractor draws vapours and odours downwards exactly where they arise- right at the cooktop. The patented BORA system consists of a cooktop with a cooktop extractor. It is characterised by high product efficiency and assures maximum design flexibility, which has revolutionized kitchen use and architecture.



Miele Induction hob with onset controls, £899



Miele Gas Hob- £849

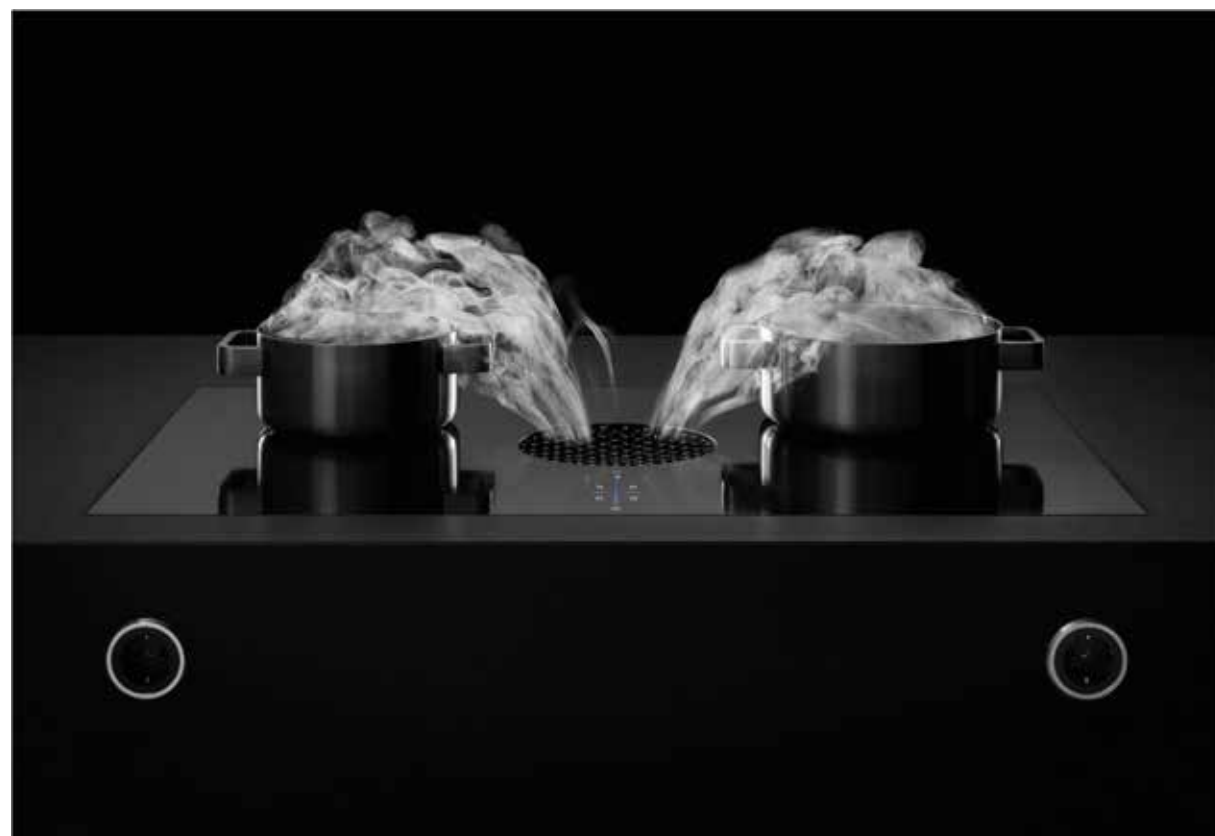


Miele Induction hob with onset controls- £1999





COOKTOPS



Bora X Pure- Induction Cooktop.  
Prices- £2860,00 - £2990,00



Bora Pure- Induction Cooktop. Prices- Recirculation  
£2180,00, Exhaust Air £2050,00



Bora Professional- Cooktop Extractor with two  
cooking zones. Prices from £4520,00



Bora Classic 2.0- Cooktop Extractor with two  
cooktops. Prices from £3620,00 - £4830,00





#### 4. Handles

If you to add an extra edge to your kitchen, there is a huge variety of Handles you can use as a final touch. We're talking Cabinet Knobs & T-Bars, Cabinet Pull Handles, Appliance Pulls, Mirrors, Cabinet Pull Handles, amongst others.

Partner  
Armac Martin



Crossways Knob- from £33



MIX Plain Knob- from £32



Kingsheath T-Bars- from £36

Crossways Pull Handle- £48



Croxford Pull- £44



888 Bin Pull Handle- £13







## our projects per budget

10k-50k .1

50k-100k .2

100k-onwards .3



## 10k - 50k

Depending on the building work and areas required, there is a huge variety of solutions that can fit within this budget.

You can plan elements such as:

- Shelved Cabinets
- A medium to high price quality range of appliances, like Miele
- A soft and painted finish on your surfaces

## Hindmans Framed Shaker Kitchen

The Hindmans Framed Shaker Kitchen has fountains of character, from the small details like the charging zones to the larger features, the pocket door larder. While there are no wall cabinets, the solid oak shelves situated above the sink run compliment the deep colour of the cabinetry.

Cabinetry

Blum storage tower

Butt hinges and full extension runners

Drawers in solid American White Oak, dovetailed construction









### Handles

Knob 38mm in satin nickel plate finish,  
£22.22 per unit, by Armac Martin

Shaker drawer pull in satin nickel plate  
finish, £3.31 per unit, by SDS London



### Cabinetry colour

Paint & Paper Library Squid Ink- A charcoal  
blue, the colour of fountain pen ink, Priced  
per litre

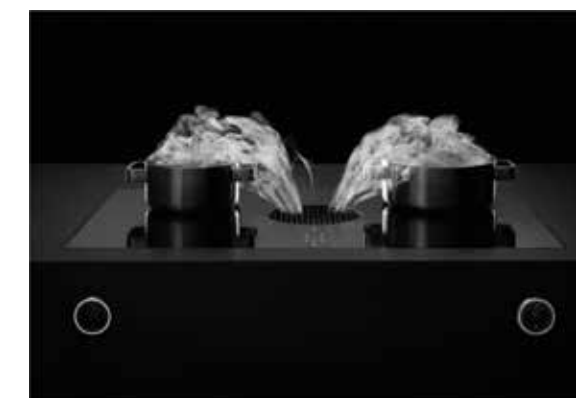






Worktop

Expo Gris / Drainage grooves / 30mm thick with chamfered edge / Suede finish,  
Price per sq. meter, by Silestone



BORA Basic flexzone integrated induction  
hob- discontinued. Option: BORA X Pure  
Tap Olympus in silk steel finish, £197 by  
Franke



Miele ContourLine appliances

Oven £2680.69

Warming Drawer £1099

Steam Combi Oven

Dishwasher

Washing Machine

Tumble Dryer

Upholstery £162

Fridge/Freezer, £2,030.00 by Fisher & Payke



## 50k - 100k

Depending on the building work and areas required, there is a huge variety of solutions that can fit within this budget.

You can plan elements such as:

- Shelved Cabinets and pull-out drawers
- A high-end quality range of appliances, like BORA
- A veneered finishing on your surfaces



## Idmiston Kitchen

A detached Edwardian house with an extension filled with striking features, from the Tamo Ash veneer cabinetry and industrial style worktop from Neolith to a marble wall and splashes of blue.

### Cabinetry

- Feature veneer in Japanese Ash Tamo Ash
- Touch to open soft close and concealed hinges
- Bespoke internal drawers with cutlery inserts & utensil inserts in American White Oak in dovetailed construction
- Hafele pull out wire basket larders and pocket door larders with mirror back and glass display shelves

### Handles

Angled handle detail











Handles  
Angled handle detail



Cabinetry Colour  
Farrow & Ball Cornforth White



Worktop  
Neolith Iron Grey / Drainage grooves / 12mm  
thick / Satin, £7,393.40







Wine climate cabinet,  
£6,988 by Gaggenau



BORA Professional with Teppanyaki &  
Induction hob/extractor + extraction duct, Full  
Price £6,861.90





Oven, £3,151 by Gaggenau

Steam oven, £2,876 by Gaggenau



Warming drawer, £904 by Gaggenau

Fridge freezer, £7,540 by Gaggenau



Fusion Square stainless steel

Tap- Boiling Water, £1,242 by Quooker



## look-onwards

Depending on the building work and areas required, there is a huge variety of solutions that can fit within this budget.

You can plan elements such as:

- Shelved Cabinets and pull-out drawers
- A high-end quality range of appliances, like BORA
  - A veneered finishing on your surfaces
  - A seating area
  - Lounge Cabinets
  - An Utility room



## Mundania Road

This open-plan contemporary-style kitchen brings the family together.

Entirely bespoke to the client's taste and lifestyle, this kitchen project also included the design of a window seat area, bespoke lounge cabinets, the utility room and the flooring.

The central Island is a statement in itself, made in Vennered Fumed Eucalyptus that present a great contrast with the White High Gloss Cabinets.

The entire kitchen was also fitted with top-end appliances.







## Utility Room

### Handles

'J' style handle design on Blum soft close hinges

### Cabinetry colour

High gloss polished Yellow B&Q Sweetcorn

High gloss polished Orange RAL 2004

High gloss polished Compliant White

High gloss polished Green RAL 6018

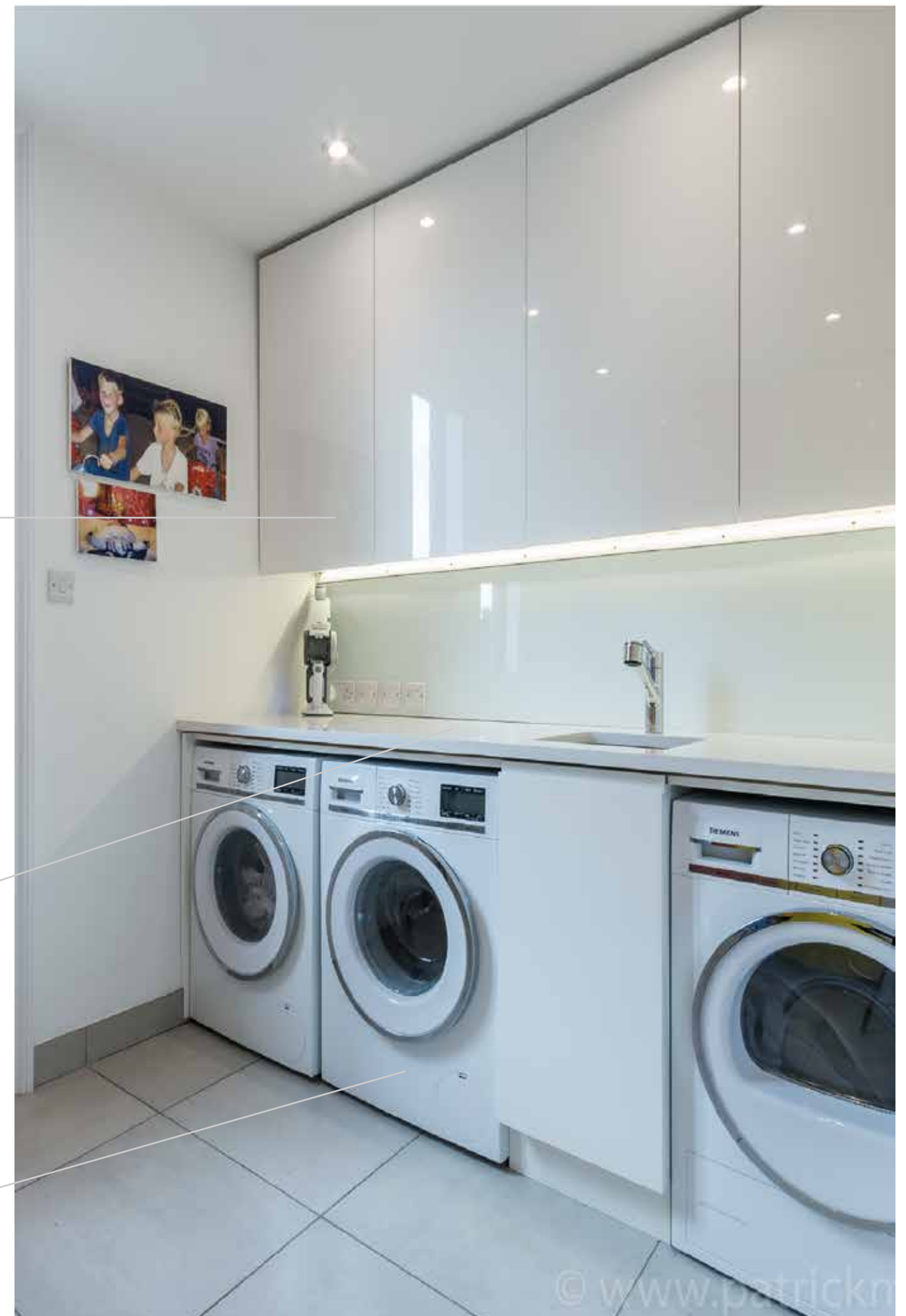
### Worktop (island)

White Quartz

Polished 30mm thick

### Appliances

Fitted with Siemens washing machines and tumble dryer







- Kitchen Cabinetry
- Hawa Folding Concepta System for tall cabinets
- Blum Intivo larder drawers with frosted glass
- Island in Fumed Eucalyptus veneer
- Island drawers in American Black Walnut
- Handles
- 'J' handle design on Blum soft close hinges for the island
- Cabinetry colour
- High gloss polished Paint & Paper Library
- Lead 4

Worktop (island)

Silestone Grey Amazon / Volcano finish 30mm thick

Worktop (in larder)

Silestone Grey Amazon / Volcano finish

Worktop (table top)

Corian Pearl Grey / 50mm thick

Appliances

Fitted with all Miele PureLine appliances, Hob  
£1,525.00

Liebherr fridge/freezer and Westin Down Draft  
Lisser flush top

Blanco Culina silk steel finish

Zip tap boiling & chilled filter water in brushed  
chrome

Bay Window Seat

Fumed Eucalyptus veneer



## full house projects look-onwards

Depending on the building work and areas required, there is a huge variety of solutions that can fit within this budget.

You can plan elements such as:

- Bespoke design in multiple areas of the house, such as a Walk-in Closet and a Bootroom
- Shelved Cabinets, pullout drawers
- Fitted Library



## Alleyn Road

For this family home, we focused on the bespoke design for the staircase, bedroom, closet, family room, office, hall and library.

### Under the stairs Nook

Alcove bookcase with moulding detail and cable management provisions. Bookcase carcass from MR Medite, shelves from MR Medite and solid lipped in American white oak, All Spray finished single colour.

### Lounge Cabinets

Storage in walls with carcass from MFC, American white oak on soft closing runners, spray finished









### Walk in Layout

Wardrobes framed shaker panel doors in MR Medite with solid tulipwood mortice and tennon frame,

### Bedroom

Framed Shaker design with tulipwood mortice and tennon frame, on concealed hinges, carcasses from MFC, drawers from American white oak drawers, dovetail construction, finished in clear A/C Lacquer.

### Study

Wall panelling– framed construction with inset panels and panel moulding, including cornice detail. All doors and panelling prime were hand painted on site.







## other projects

10k-50k .1

50k-100k .2

100k-onwards .3

# Court Lane





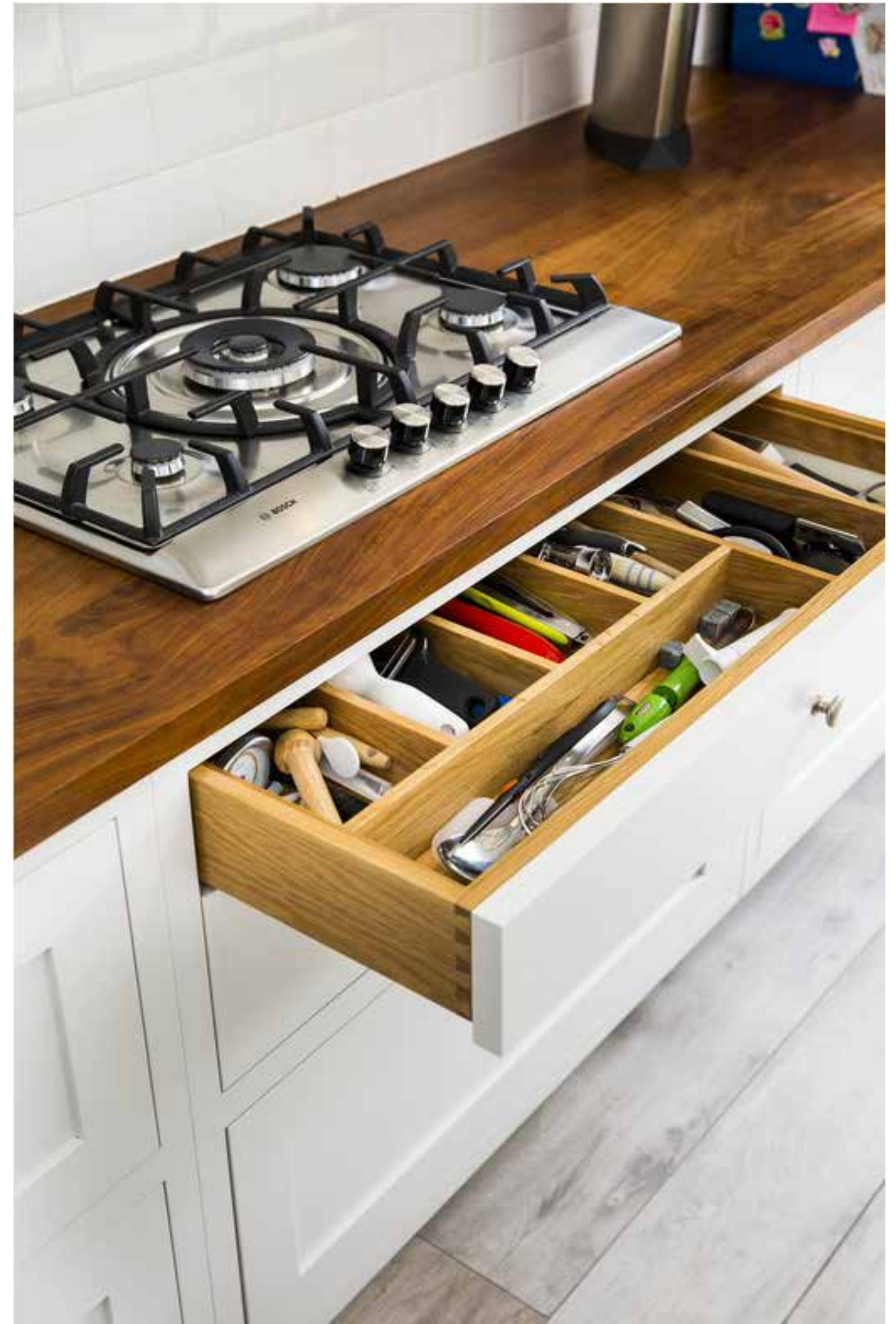




# Elfindale









# Greenways





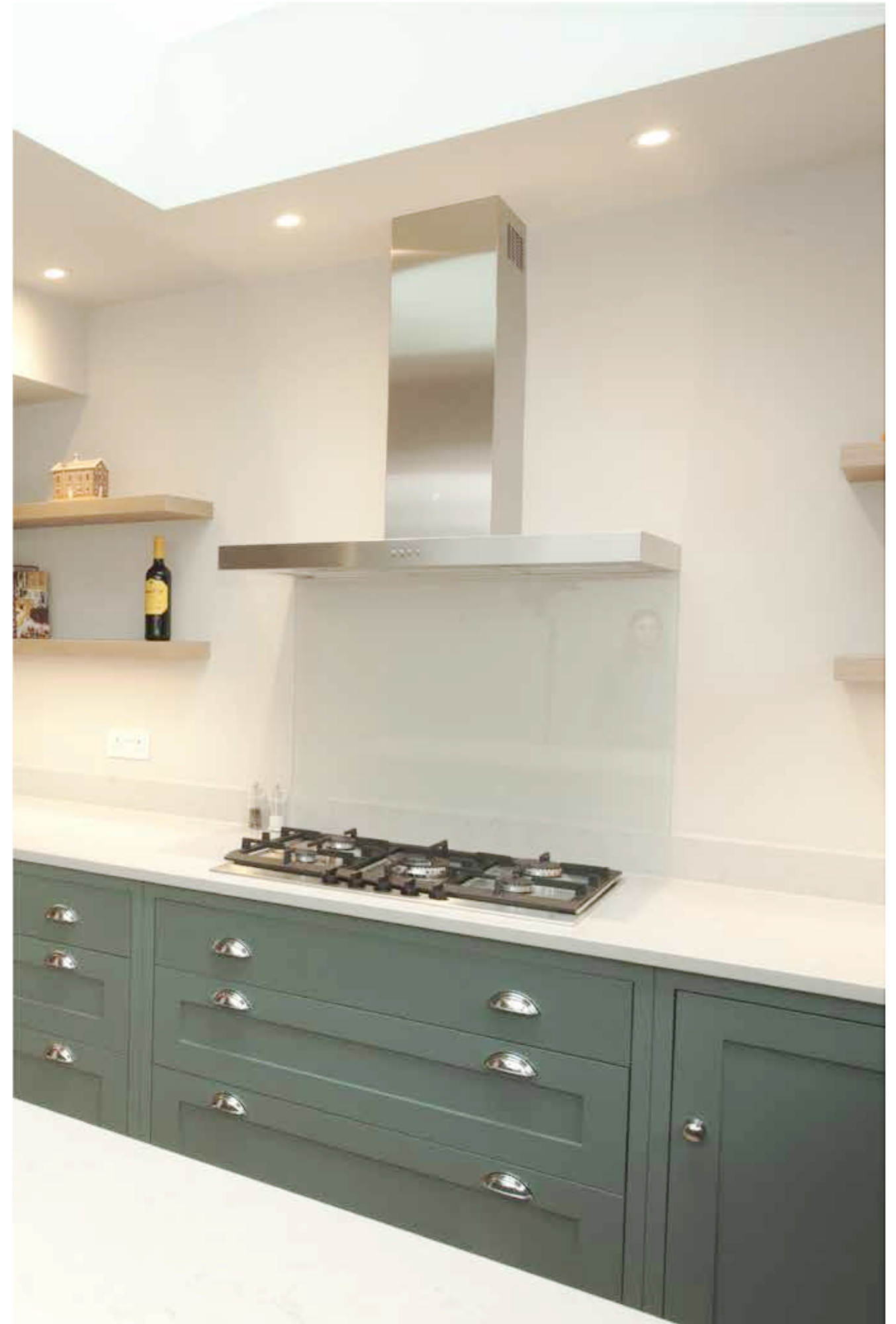




# Springcroft













## contact

020 8613 1781 info@iandunn.com

4&5 Goose Green Trading Estate

47 East Dulwich Road, SE22 9BN

 [www.iandunn.com](http://www.iandunn.com)  iandunn\_woodworkanddesign\_

 <https://www.linkedin.com/in/ian-dunn-woodwork-and-design>

 <https://www.houzz.co.uk/pro/ianf4/ian-dunn-woodwork-design>